



MONTHLY MEMBERSHIP PROGRESS REPORT

District 5M 5

Results as of: 05/31/2018

GMT: MICHAEL MOLENDIA

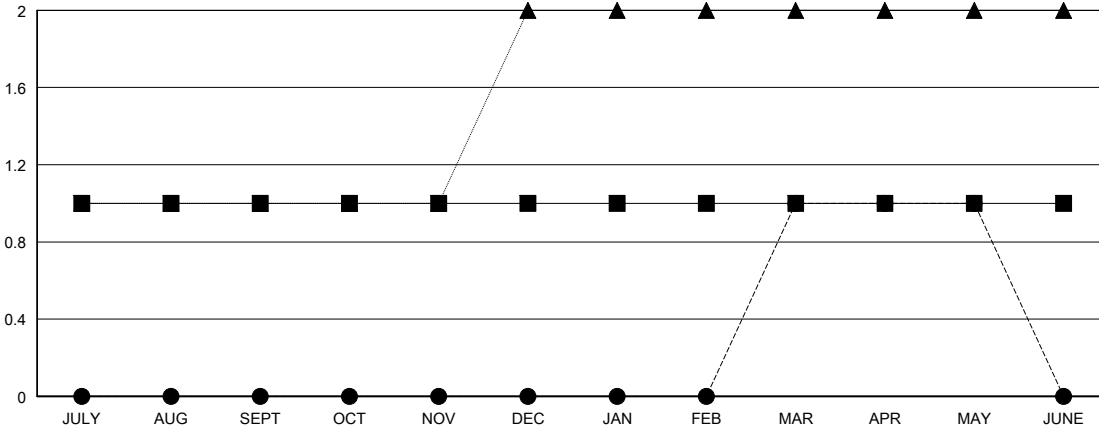
LOCATION MINNESOTA

GMT CA

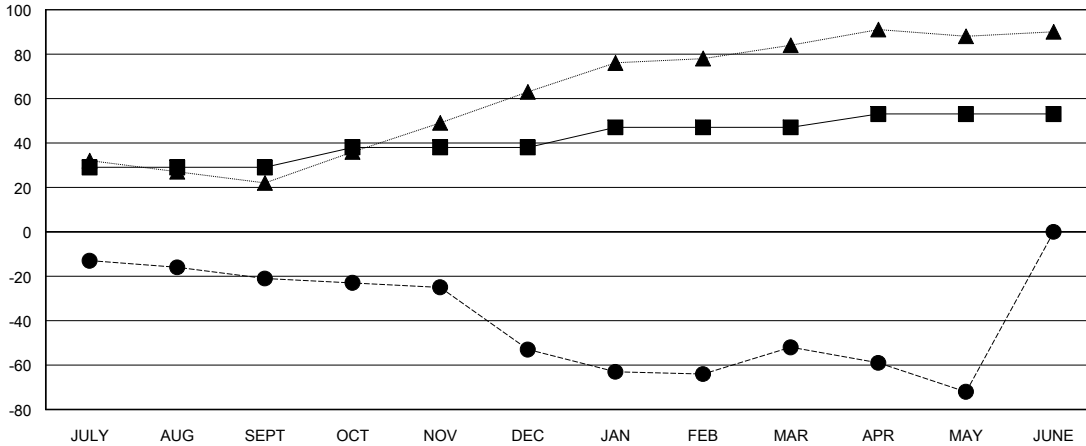
Clubs			
RESULTS FOR 2017-2018			
QUARTER	NEW CLUB GOAL	NEW CLUBS	DROPPED CLUBS
JULY/AUG/SEPT	1	0	1
OCT/NOV/DEC	0	0	1
JAN/FEB/MAR	0	1	0
APR/MAY/JUNE	0	0	0

Members			
RESULTS FOR 2017-2018			
QUARTER	MEMBER GROWTH NET GOAL	MEMBER GROWTH ACTUAL	DROPPED MEMBERS ACTUAL (including transfers)
JULY/AUG/SEPT	29	15	34
OCT/NOV/DEC	9	36	64
JAN/FEB/MAR	9	67	39
APR/MAY/JUNE	6	15	32

GOALS AND ACTUAL NEW CLUBS CUMULATIVE



GOALS AND ACTUAL MEMBERS CUMULATIVE



DROPPED CLUBS: 2

28 CLUBS OF 43 ADDED 1 OR MORE NEW MEMBERS

GENDER DISTRIBUTION	
MALE	1,046 (72.34%)
FEMALE	400 (27.66%)
Women Percentage Fiscal Year Goal: 30%	

DROPPED MEMBERS	
DECEASED	15
CLUB CANCELLED	29
OTHER	125
TOTAL	169

[CLICK HERE FOR CUMULATIVE MEMBERSHIP DATA](#)

TOTAL FAMILY UNIT MEMBERS	224
FAMILY MEMBERS PAYING HALF DUES	115